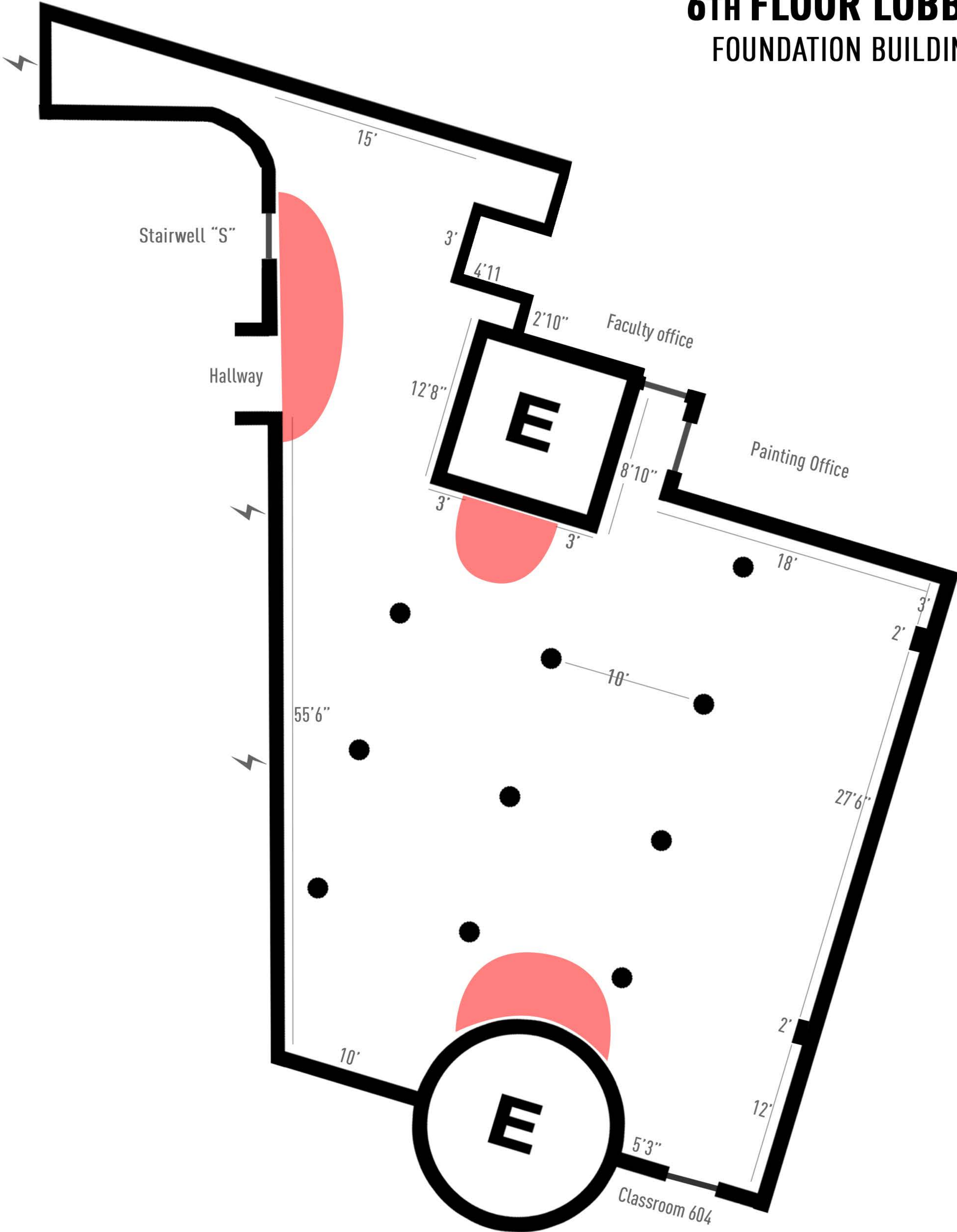


6TH FLOOR LOBBY

FOUNDATION BUILDING



Tackable wall height: 7'6"
Ceiling height: 11'10"
Electrical outlets: ⚡

Areas marked in red should remain clear.

6TH FLOOR LOBBY

FOUNDATION BUILDING

General Guidelines

- Wall structures/projection screens must be hung at least 18in below the ceiling.
- Large anchors or screws may not be used on the columns. Smaller hardware and alternative installation options are possible.
- No drilling or anchoring to the floor.
- Lights directly in front of the elevators must remain illuminated. Exit signs cannot be obscured or covered.
- A 4ft clearance must be maintained in and around any sculptural installation that is occupying a large portion of the exhibition space.
- A clear line of sight and direct path must be maintained from any elevator or classroom/office to the exit stairs.
- Do not block or obstruct classroom/office doors.